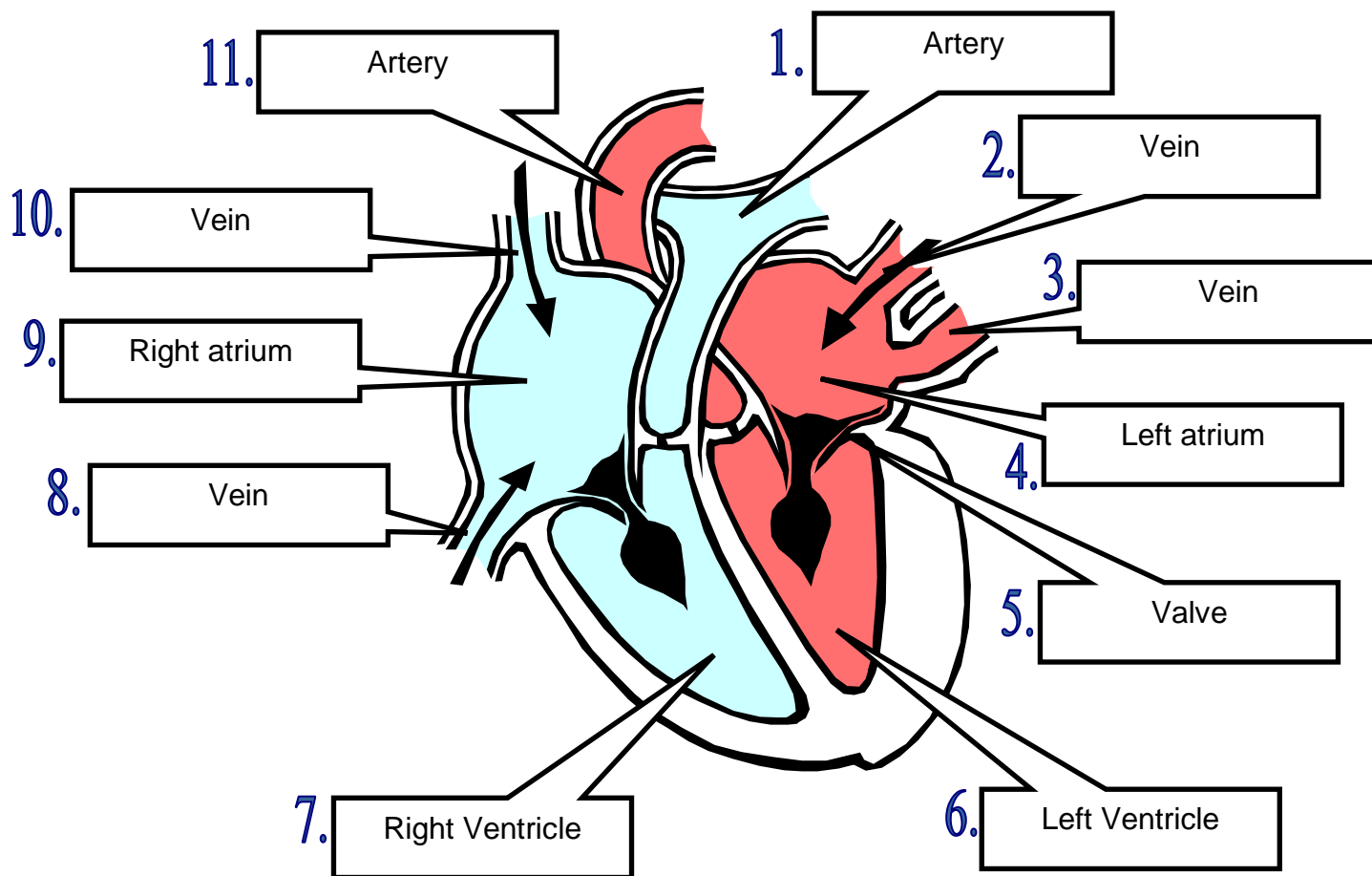


Basic Mark scheme

The Heart

Humans as organisms



Number of blood vessel	Function of blood vessel
8+10	Carries blood from the body to the heart.
1	Carries blood from the heart to the lungs.
2+3	Carries blood from the lungs to the heart.
11	Carries blood around the body.

Arteries carry blood away from the heart to the body parts.

Capillaries carry blood through the body parts.

Veins carry blood back to the heart.

The left side of the heart has a thicker wall to pump blood all around the body.