



www.PrimaryClass.co.uk

MATHEMATICS CHRISTMAS QUIZ

Year 5/6 - Ages 9 to 11 - loosely based on the English Mathematics Curriculum 2014
20 questions separated into 2 rounds - Number and non number. Answers after each round.
You can also answer the questions using activexpression devices. Have fun!

ROUND 1



NUMBER AND CALCULATIONS

1 Rudolph needs to know the value of the underlined number, what is it?

53076

- A** Three Thousand
- B** Three Hundred
- C** Three
- D** Thirty Thousand



2

To deliver the presents, Santa needs to put these house numbers in order...(smallest first)

A 382950

B 329805

C 953082

D 903582



3 Santa gets 3859 Christmas Cards,
how many does he get to the
nearest 100?

A 4000

B 3860

C 3800

D 3900



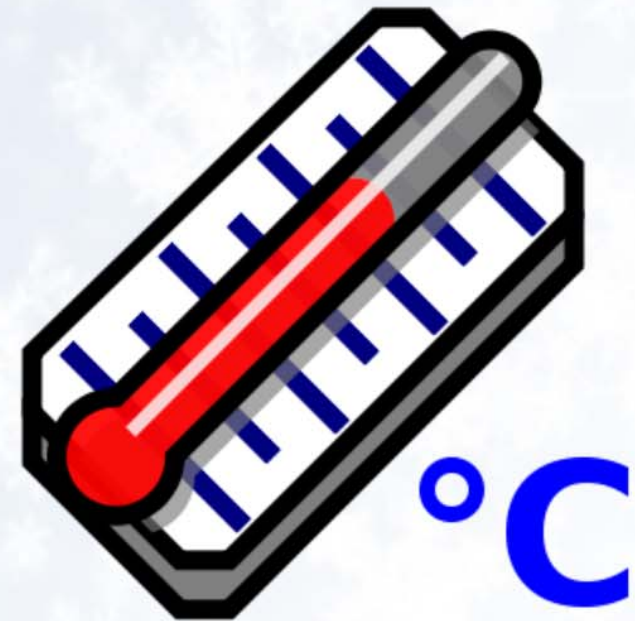
4 In the day time, the temperature at the north pole is 8°C , at night it drops by 14°C , what is the temperature at night?

A -22°C

B -6°C

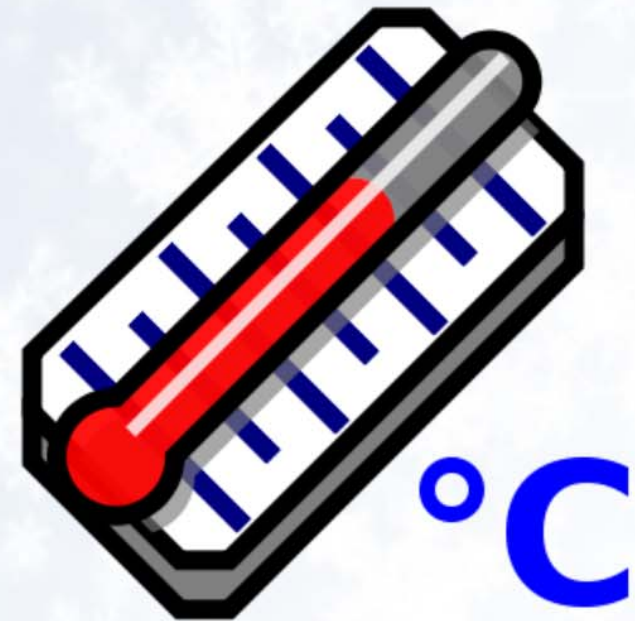
C 22°C

D 6°C



5 The next day the north pole temperature increases from -6°C , to 6°C , how much has it increased?

- A** 12°C
- B** 10°C
- C** -12°C
- D** Same



6 In the strong wind, Santa's gigantic Christmas tree loses 430 baubles, it started with 1100, how many are left?

A 770

B 1530

C 670

D 570



7 Santa organises the presents into rows of 13, with 13 presents in each. What is 13^2 ?

A 260

B 144

C 169

D 26



8 Santa shares his bag of sweets with his 100 elf helpers. His bag has 808 sweets in, how many do they get each?

A 0.808

B 88

C 8.8

D 8.08



9 Santa needs to put his left over Christmas cakes in order... (smallest to largest)

A 0.4

B 80%

C $\frac{1}{4}$

D $\frac{7}{10}$



10

Which of these fractions of a christmas cake are NOT equivalent to $\frac{6}{9}$?

A $\frac{12}{18}$

B $\frac{2}{3}$

C $\frac{18}{21}$

D $\frac{30}{45}$



ROUND 1 ANSWERS



1. A: Three Thousand
2. BACD
3. D: 3900
4. B: -6°C
5. A: 12°C
6. C: 670
7. C: 169
8. D: 8.08
9. CADB
10. C: 18/21

ROUND 2



NON-NUMBER

11

Whilst flying in the sleigh, Santa makes a 190° turn. What kind of angle is this?

- A** right angle
- B** acute angle
- C** obtuse angle
- D** reflex angle



12

A rectangular present has a perimeter of 18cm, and an area of 20cm^2 .

What is the length of the rectangle?

A 4cm

B 5cm

C 10cm

D 2cm



13

A Christmas party hat has 3 angles.
 35° , 95° and...

A 60°

B 40°

C 50°

D 70°



14

Using the co-ordinates on his map, Santa flies left 5 and up 6 from position $(4, -2)$. Where does he finish?

A $(1, -4)$

B $(-1, -4)$

C $(1, 4)$

D $(-1, 4)$



15

20% of Santa's 140 elves come down with a cold and cannot work. How many are able to still work?

- A** 28
- B** 20
- C** 112
- D** 120



16

Recipe for 4 mince pies:

200g of mince filling, 200g flour,
60g of butter, 100ml water.

Which is the correct recipe for 10 pies?

A

50g mince, 50g flour, 15g butter, 25ml water

B

500g mince, 500g flour, 150g butter, 250ml water

C

800g mince, 800g flour, 240g butter, 400ml water

D

2kg mince, 2kg flour, 600g butter, 1l water



17

Santa buys Rudolph a new jumper for £12.25 and a tie for £5.80. What change does he get from £20.00?

- A** £1.95
- B** £2.00
- C** £18.05
- D** £18.50



18

What is the volume of a cuboid present if the sides are 10cm, 15cm and 5cm?

- A** 30cm^3
- B** 600cm^3
- C** 750cm^3
- D** 25cm^3



19

When Santa gets to France, the signs are all in kilometres. He knows he has 6 miles to travel to the next town - roughly how much is this in km?



- A** 6km
- B** 12km
- C** 5km
- D** 10km



20 It takes Santa 6 hours to travel through Europe, 6 hours for Africa, 8 hours for Asia, 9 hours for America and 6 hours for Australia. What is the mean time?

A 5 hours

B 7 hours

C 6 hours

D 8 hours



ROUND 2 ANSWERS



11. D: reflex angle

12. B: 5cm

13. C: 50°

14. D: (-1,4)

15. C: 112

16. B: 500g mince, 500g flour, 150g butter, 250ml water

17. A: £1.95

18. C: 750cm^3

19. D: 10km

20. B: 7 hours

Curriculum 14



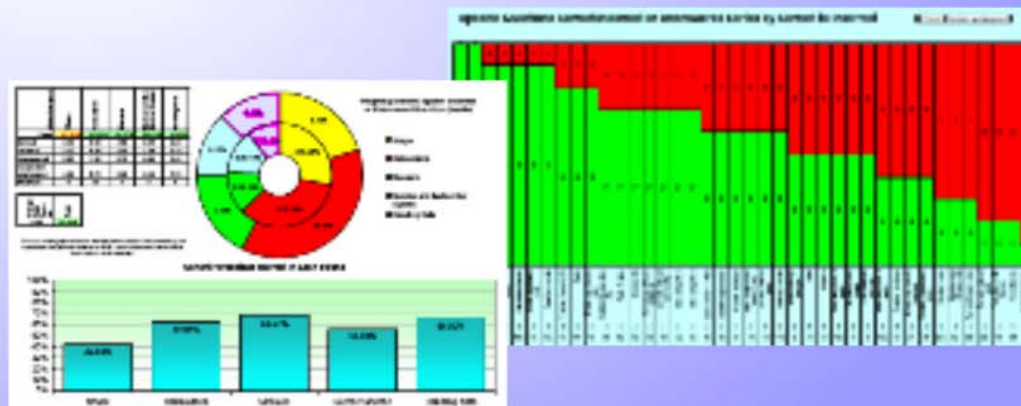
C14 Assessment Bookmarks



C14 Based Spelling Journals



C14 On one A4 Sheet



Past Tests and Test Analysis Tools



www.PrimaryTools.co.uk



www.PrimaryClass.co.uk